



Annual Report

Fiscal Year 2017

THRESHOLDS

OUR WORK

Established in 1959, Thresholds provides healthcare, housing, and hope for thousands of individuals living with mental illnesses and substance use disorders in Illinois each year. Thresholds is the largest provider of community mental health services in Illinois, providing evidence-based services through a holistic approach to treat the whole person.



OUR MISSION

Thresholds assists and inspires people with mental illnesses and substance use disorders to reclaim their lives by providing supports, skills, and the respectful encouragement they need to achieve hopeful and successful futures.

OUR KEYS TO RECOVERY

Community Support

Thresholds provides a comprehensive array of clinical services in a community setting. Our clients have access to case management, psychiatric care, group and individual therapy, the evidence-based practices of Wellness Management and Recovery and Integrated Dual Disorders Treatment, and more.

Housing

The journey to self-sufficiency and recovery begins with a home. Thresholds residential programs offer a variety of community housing options for people with serious mental illnesses.

Supported Employment

The Supported Employment program helps clients live with dignity, independence, and respect by obtaining paid employment through one of our more than 150 community partner employers.



HOME

The journey toward recovery and self-sufficiency begins with a home.

Thresholds operates over 1,000 housing units in more than 80 residential locations, making the agency **Chicago's largest supportive housing provider**. Residents are given opportunities to develop social and independent living skills, setting them up to be integral parts of their communities.





2,389 clients were housed through agency-owned housing, rental assistance, and housing vouchers



As a participant of the Chicago Partnership to End Homelessness, **Thresholds makes every effort to operate on the principle of Housing First.** We believe housing should be provided regardless of when an individual is ready to receive other services.

HEALTH

Thresholds believes in treating both physical and mental health together.

People with serious mental illnesses die 28 years earlier on average than the general population, most frequently due to co-occurring, treatable medical conditions. **Thresholds offers services designed to integrate mental health, substance use, and primary care treatment to support persons with serious mental illnesses.** This is done by providing a person-centered, holistic approach to recovery.





1,765 clients made **7,910** visits to our Integrated Health Care clinics for primary care in addition to behavioral health services



Our integrated care services are provided through partnerships with like-minded Federally Qualified Health Centers. These partners have co-located their clinics into three of Thresholds programs.

HOPE

Recovery is possible.

Recovery is a process of **finding and living a satisfying and meaningful life**, as defined by oneself. Thresholds assists clients as they work to reclaim a positive sense of self, discover their own potential, and remain hopeful for a better future.





36 programs offer unique services to meet each client's individual needs



Thresholds rejects the notion that anyone is a lost cause. Our foremost goal is to ensure that every individual in our care receives the necessary skills and support to **live an independent and fulfilling life.**

BOARD OF DIRECTORS

Mark Ishaug
Chief Executive Officer

Dan Klaff

President

Suzet M. McKinney

Vice President

Robert Spencer

Treasurer

James A. Kolar

Assistant Treasurer

Judy Maley

Secretary

Ronald B. Grais

Assistant Secretary

Benjamin Albrecht

Jana Barbe*

Samuel Bottum

Pamela Buffett**

Deborah Carroll

Raymond E. Crossman, Ph.D.

Hal D'Orazio

Joanne Dahm

David Evelyn

M. Fred Friedman

Satyender Goel, Ph.D.

Kathy Graham

Sabrina Tengelsen Guthrie

Mary Jo Herseth*

Mary Hill*

Vicki Horwich

Cynthia Jones

Leo Lanzillo

Anna LauBach

Steven Levin

Roxanne M. Martino*

Keith McClintock

Pete McNerney

Rob Miller

Joseph Moos

Dr. Ven Mothkur

Sharon Neal

Ina N. Owns, LCSW

Gino Pinto

Tammy Randa

Christine M. Rhode

Sue Roberts

Dr. Beth Rom-Rymer

Linda G. Sahagian

Chris Segal

Shari Slavin

LIFE DIRECTORS

Roger Brown*

William A. Crane*

Howard D. Galper

Mrs. Max A. (Florence) Hart*

Richard J. Loewenthal, Jr.

James W. Mabie*

Adrianne Mautner

*Past President

**Honorary Director

Dear Friends,

This past year has moved Thresholds forward in powerful ways, and we could not have done it without your support. Our advocacy efforts, combined with those of countless human services providers across the state, resulted in the passage of a balanced state budget; we expanded our programs to serve a record number of clients; and we completed one of our most successful fundraising campaigns ever. And we are still moving forward to serve more people with even better services!

This year, we fought hard. With persistence and patience, we voiced our concerns over attempts to repeal the Affordable Care Act (ACA) and make cuts to Medicaid that would devastate our clients. We pushed for increased access to treatment for mental illnesses and substance use disorders, and laid the groundwork for policy change in Illinois to make our behavioral health system work better for everyone.

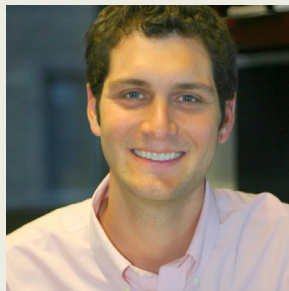
This year we opened multiple new locations and expanded our integrated care efforts with partnerships with Aunt Martha's Health and Wellness, Heartland Heath Center, Genoa Pharmacy, and Howard Brown Health. Thousands of our clients are now receiving the best, most integrated physical and mental health care we have ever offered.

None of this would be possible without the daily diligence of our amazing staff. They put in the work on the front lines each and every day. With the support of our strong leadership, together, we have the power for change.

Here at Thresholds, we know that recovery is more than treatment – it's raising awareness in our community, advocating for fair and equal healthcare, and helping set and achieve goals. We are so grateful to have the generosity and partnership of friends and community like you. Thank you.

Sincerely,

Mark Ishaug
CEO
Thresholds



Dan Klaff
Board President
Thresholds

2017 HIGHLIGHTS

Each year, Thresholds achieves new successes, reaches bigger milestones, and sets higher goals for the future, thanks to the support of our donors and partners.

16,500 clients received services through Thresholds programs last year



Thresholds operates **97** site locations throughout the state of Illinois

More than **650,000** hours of care were provided



700 clients found jobs
through our Supported
Employment Programs



115 youths and young adults
received services through our
MindStrong and Emerge programs

The Justice Program served **600**
individuals recently released
from the prison system



300 veterans were served
through the Thresholds
Veterans Project

NEW AT THRESHOLDS

This past year gave us many reasons to celebrate, from renovating old spaces, to welcoming new partnerships. Here are a few highlights from last year.



Thresholds expanded our [Substance Use Program](#) to provide services on the west side of Chicago, south suburbs, and north side of Chicago, including specific services for youths.

Thresholds celebrated the opening of two new locations for programs and services last year.

The Thresholds DuPage County location provides a full range of services, from therapy for mild mood disorders at Motivent Total Health, to early intervention treatment for young adults experiencing psychosis at MindStrong.



The Phyllis and Perry Schwartz Center for Integrated Health is a comprehensive health center for both physical and mental health treatment services - all under one roof - thanks to our partners, Heartland Health Centers and Genoa.

PRIVATE INSTITUTIONAL DONORS

\$100,000+

Polk Bros. Foundation
Robert R. McCormick Foundation
The Rebecca Susan Buffett Foundation
Otho S.A. Sprague Memorial Institute
United Way of Metropolitan Chicago
Michael Reese Health Trust
Anonymous
Klaff Family Foundation
G. Carl Ball Family Foundation

\$50,000 - \$99,999

Anonymous
VNA Foundation
Johnson & Johnson Health Care Systems, Inc.
Julius Frankel Foundation
New Trier Township
Chicago Community Trust
BlueCross BlueShield of Illinois

\$25,000 - \$49,999

I & G Charitable Foundation
George L. Shields Foundation, Inc.
Anonymous
Enterprise Community Partners, Inc.
Charles & M. R. Shapiro Foundation
Chicago White Sox Community Fund

Anonymous
MB Financial Bank
McHenry County Community Foundation
Edmond and Alice Opler Foundation
J. S. Frank Foundation
BMO Harris Bank
Bowman C.Lingle Trust
Gladys Brooks Foundation
Grant Healthcare Foundation
Healthcare Foundation of Northern Lake County
James P. and Brenda S. Grusecki Family Foundation
Leo S. Guthman Fund
Northern Trust

\$10,000 - \$24,999

Tengelsen Family Foundation
Community Memorial Foundation
Janssen Pharmaceutical, Inc
Cuore E. Mani Foundation
Disabled American Veterans (DAV)
Anonymous
Alfred Bersted Foundation
Barker Welfare Foundation
Seabury Foundation
Niles Township Government
Lundbeck
Altria Group, Inc.
Carl R. Hendrickson Family Foundation

Full Circle Foundation
GFF Foundation
Martin Foundation Inc.
Oak Tree Foundation
Peoples Gas and North Shore Gas Community Fund
Ravenswood Health Care Foundation
Roslyn and Joseph Perlman Foundation
Sage Foundation
Segal Family Foundation
Siragusa Family Foundation
The Harry and Jeanette Weinberg Foundation, Inc.

\$5,000 - \$9,999

Coldwell Banker Charitable Foundation
Illinois Department of Veterans Affairs
Aetna Better Health
Brinshore Development
Matsock Insurance and Financial Services
Medication Management Partners
Sunovion Pharmaceuticals Inc.
IlliniCare Health Plan
Meridian Health Plan of Illinois
The Lesser Agency
FPC Corporation
Hoellen Family Foundation
Mental Health Resource League
A.G. Cox Charity Trust

C. Louis Meyer Family Foundation
Chapman and Cutler LLP
Cigna-HealthSpring
Dentons
Ellen and Ronald Block Family
Foundation
Elsdon Medical Pharmacy
George M. Eisenberg Foundation
for Charities
Illinois Medical District
Commission
MADO Healthcare LLC
Negaunee Foundation
Otsuka America Pharmaceutical,
Inc
Pierce and Associates, P.C.
Schultz Family Private Foundation
Seigle Family Foundation
Staples Foundation
Sulzer Family Foundation
TJX Foundation
Turner Construction Company
Vradenburg Foundation
William Blair
First Bank of Highland Park
Foundation

\$1,000 - \$4,999

Francis Beidler Foundation
RMB Capital
Sinai Health System
Comcast Business
Cowlin Foundation
Humana
The Butler Family Foundation

Vernon Township
Glenview Community Church
Women's Association
Village of Northbrook
Clarke Family Foundation
Kenilworth United Fund, Inc.
LG Construction and Development
Pipeworks Production
Adreani Foundation
Lawlor Foundation
Rodam Club
Together4Health
Sahara Enterprises, Inc.
Beacon Health Options
Plante Moran
Aon
Berner Charitable and Scholarship
Foundation
Bindler Family Foundation
Blum-Kovler Foundation
Bomher Family Foundation
BrickStreet Insurance
Christ Church - Benevolence
Committee
Endodontic & Periodontic
Associates, Ltd.
Evanston Capital Management,
LLC
Gertrude B. Nielsen Charitable
Trust
Greenlight Capital Inc.
Jocarno Fund
La-Co Industries Inc.
Lincoln Park Presbyterian Church
Melvoin Foundation

Modestus Bauer Foundation
Rothman Family Foundation
U.S. Bank Foundation

\$500 - \$999

Resource Brokerage, LLC
Community Care Alliance of
Illinois
Central DuPage Hospital
National Safe Place, Inc.
Windy City Playhouse
The Miester Family Charitable
Fund
Honey Butter Fried Chicken
Pamela Buffett
Charles G. and Rheta Kramer
Foundation
DevCorp North
Edwin F. Schild Charitable
Foundation
J. Landis & Sharon Martin Family
Foundation
Northfield Community Church
Pebblefork Partners, Inc.
PharMerica Corporation
Progressive
Woods Fund of Chicago
Zurich Insurance



WHAT OUR CLIENTS SAY:

"Thank you Thresholds for all that you do! I feel more hopeful because of your support and friendship."

"The kindest and most beloved people work at Thresholds. Thank you!"

"Thresholds is like a family. I'm treated with love, respect and dignity. I reclaimed my life there."

STATEMENT OF REVENUE AND EXPENSES FY2017

PUBLIC SUPPORT

Medicaid Service Revenue	40,834,118	42.1%
Grants and Fees from Government Agencies	39,148,823	40.4%
Community Contributions	6,685,138	6.9%
Special Events Income	559,223	0.6%
Total Public Support	\$87,227,302	90%

OTHER REVENUE

Service Fees	1,450,358	1.5%
Residential Fees	3,019,560	3.1%
Rent Subsidy	2,264,750	2.3%
Realized Gain on Fixed Asset Dispositions	606,651	0.6%
Realized and Unrealized (Loss) Gain on Investments	599,974	0.6%
Interest and Divident Income	481,801	0.5%
Other Income	1,339,940	1.4%
Total Other Revenue	\$9,763,034	10%

TOTAL REVENUE	\$96,990,336	100%
----------------------	---------------------	-------------

DIRECT PROGRAM EXPENSES

Vocational and Social Rehabilitation	3,371,785	3.6%
Case Management and Care	49,786,927	53.1%
Independent Living	16,071,154	17.1%
Research Projects	538,176	0.6%
Youth Services	9,443,674	10.1%
Total Direct Program Expenses	\$79,211,716	84.5%

SUPPORT SERVICES

Administrative	13,390,192	14.3%
Development and Fundraising	1,156,686	1.2%
Total Support Services	\$14,546,878	15.5%

TOTAL EXPENSES	\$93,758,594	100%
-----------------------	---------------------	-------------

CURRENT YEAR SURPLUS	\$3,231,742	
-----------------------------	--------------------	--

THRESHOLDS

HOME

HEALTH

HOPE

Thank you!

www.thresholds.org